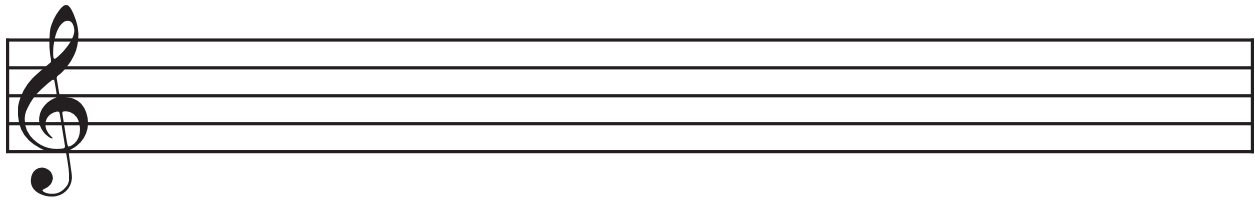
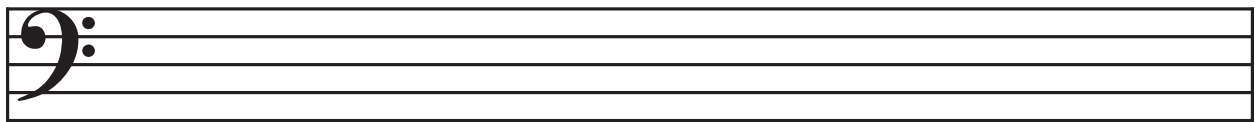


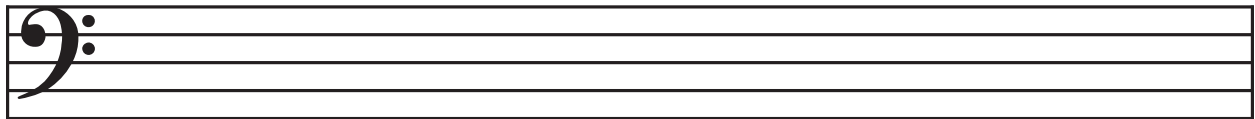
PREP Notes, Ledger Lines & The Grand Staff

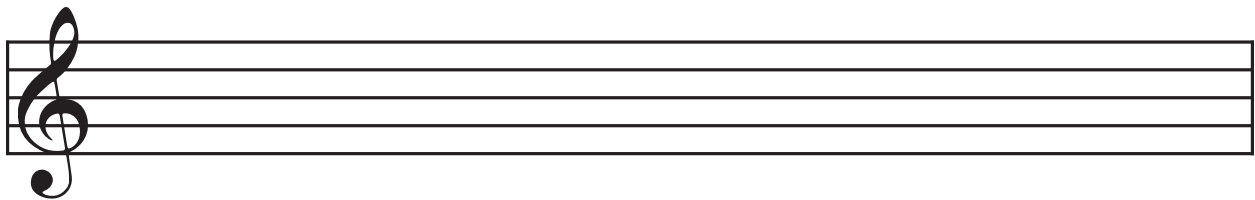
1. Write a note in every space and name each note.





2. Write a note on every line and name each note.

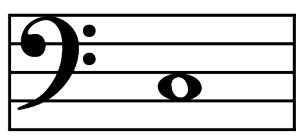
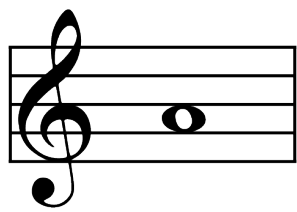
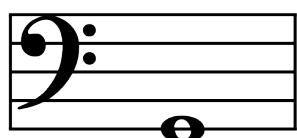
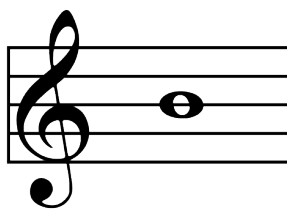
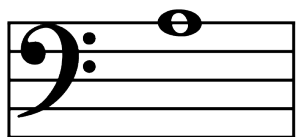
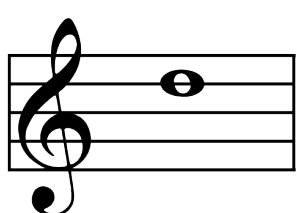
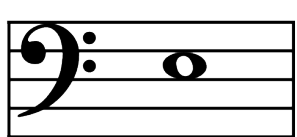





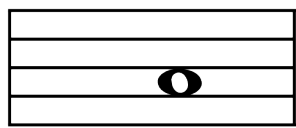
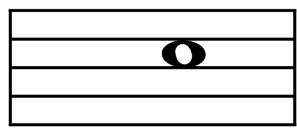
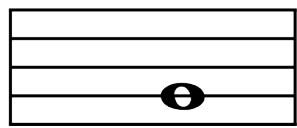
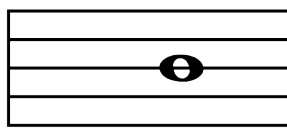
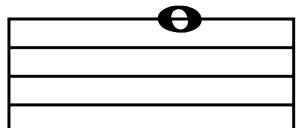
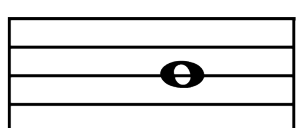
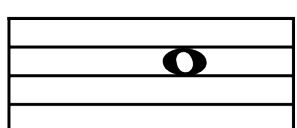
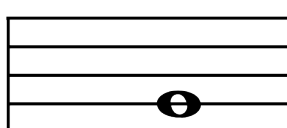
3. What phrase do you use to remember the line notes on bass staff?

PREP Notes, Ledger Lines & The Grand Staff

4. Name each note on staves below.

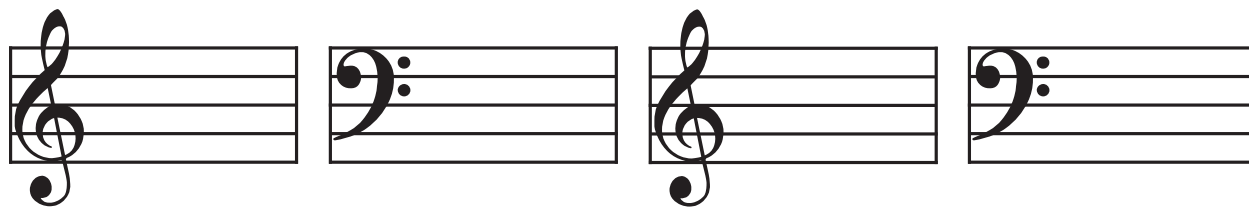
			
—	—	—	—
			
—	—	—	—

5. Add the correct clef to the notes on the staves below.

			
A	C	B	D
			
F	D	E	G

PREP Notes, Ledger Lines & The Grand Staff

6. Write the listed note on the staves. **A B C D E F G**

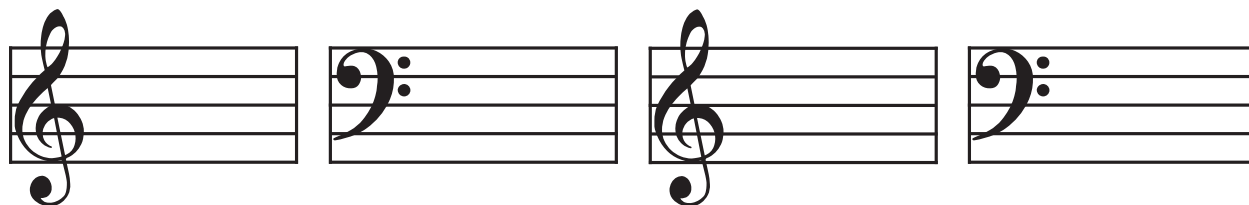


C

G

A

D

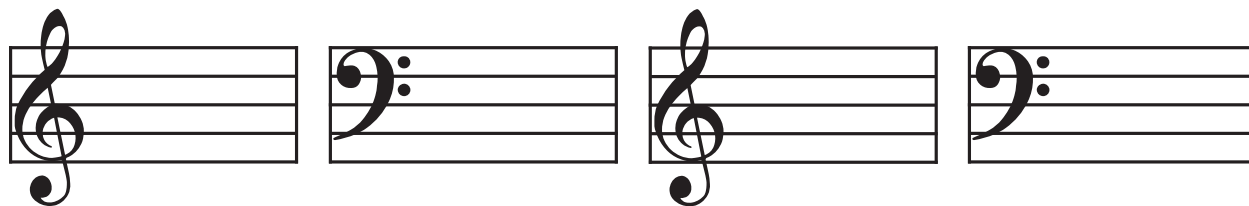


F

B

E

A



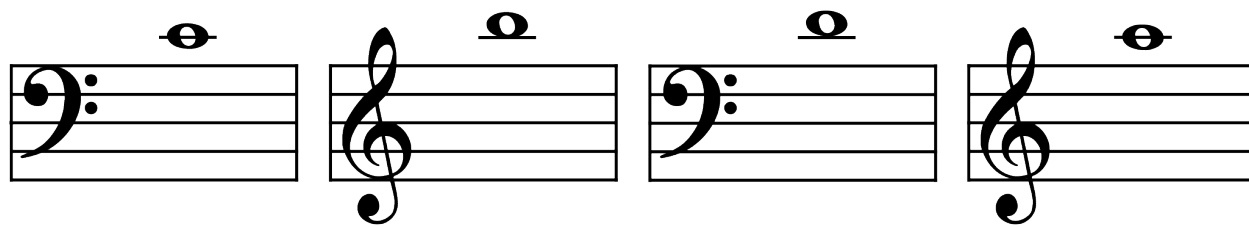
G

A

D

F

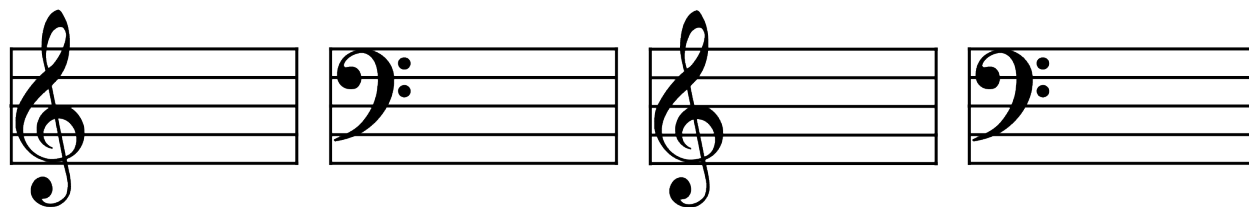
7. Name these ledger line notes.





PREP Notes, Ledger Lines & The Grand Staff

8. Draw these notes above or below the staff. (*Hint: Don't forget to use ledger lines if you need them.*)

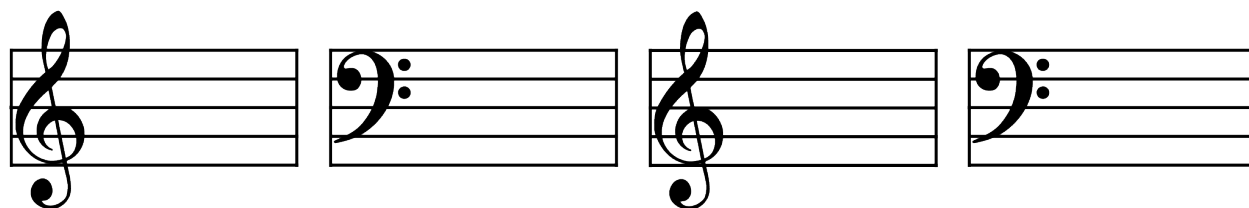


High **G**

Low **F**

Middle **B**

Low **D**



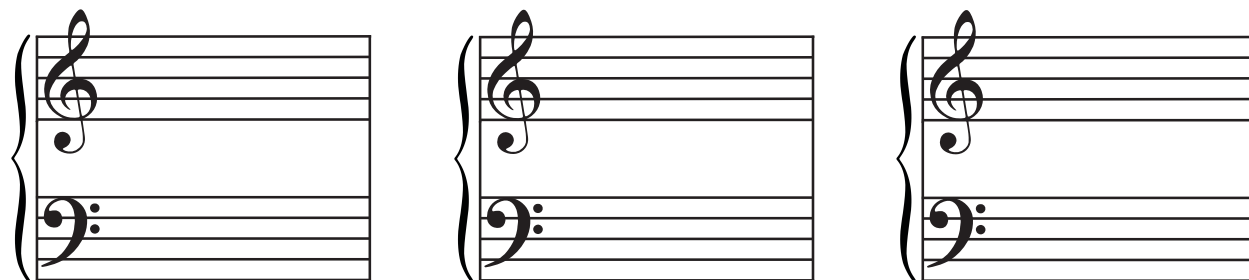
High **A**

Low **E**

Middle **D**

Middle **B**

9. Write the listed note in at least 3 places on the grand staves below.



C

E

A

10. Notes on the grand staff meet at _____.